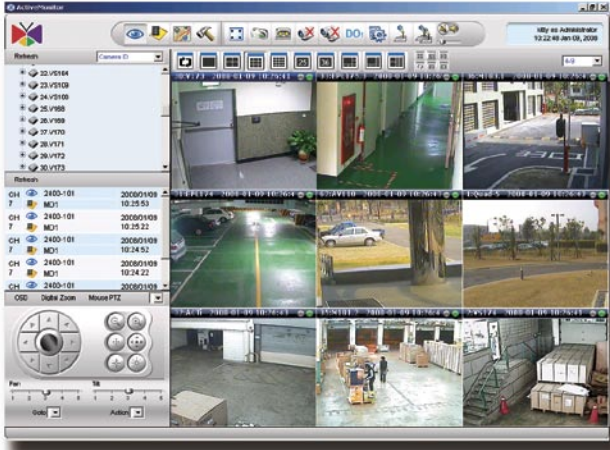




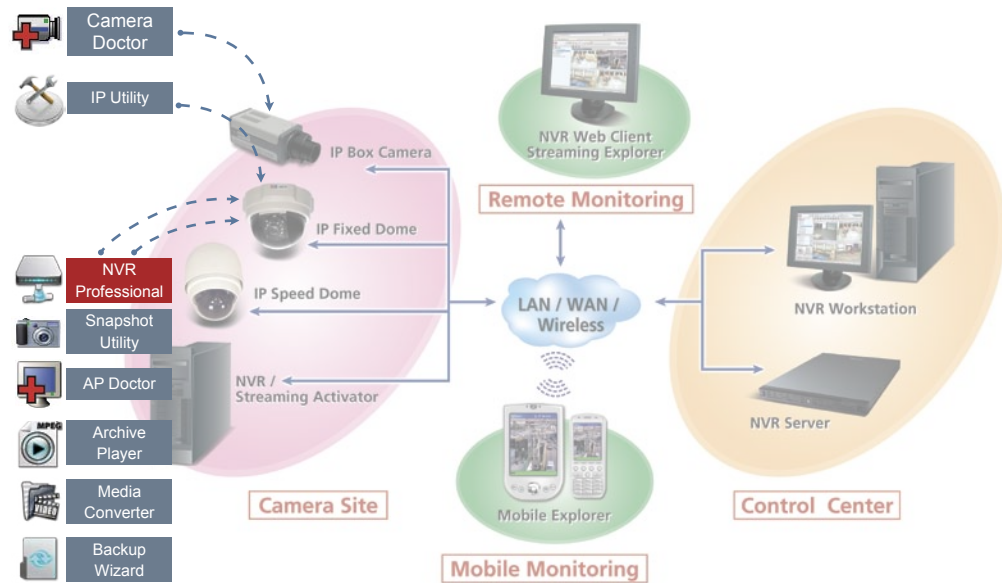
NVR Professional

ACTi NVR Professional



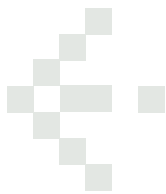
- Support for single site surveillance
- Free license for 64 channels
- Manage up to 64 cameras with tree-directory display
- Support 1, 4, 6, 8, 9, 10, 16, 25, 36, 49, 64 window layout
- Support megapixel MPEG-4/H.264/MJPEG format
- Support customized logo and user interface
- Multiple-channel preview in full-screen mode
- Support different frame rate on preview and recording
- Digital zoom on preview and playback
- Continuous, Schedule, Motion, Alarm Recording
- Support motion detection and Digital I/O event from hardware
- Maximum 30 seconds pre-event recording
- Expandable PTZ commands
- Search video clips by date, time and event
- Time-based search bar
- 4-channel synchronized playback
- eMap Manager

POSITIONING



BUNDLED APPLICATION

Management Utility	
IP Utility	Search, manage devices, upgrade firmware, backup/restore configuration
Snapshot Utility	Create snapshots in JPEG with resized resolution and send via Mail or FTP
Archive Player	Archive playing tool with playback panel and snapshot functions
Media Converter	Converts recorded archives to AVI files
Backup Wizard	Backup and restore configuration on NVR
Remote Utility	
Streaming Explorer	Web tool to manage devices remotely, comes with PTZ configuration tool
Trouble-Shooting Utility	
Camera Doctor	Device diagnosis and firmware debug tool
AP Doctor	NVR diagnosis and application debug tool

**PRODUCT SPECIFICATION**

System Requirements	
PC Specification	16 Channel: Intel Core 2 Duo 2.4 GHz, 1 GB Memory, 250 GB HDD, Gigabit Ethernet, nVidia GeForce 7600 256 MB RAM 32 Channel: Intel Core 2 Duo 2.67 GHz, 2 GB Memory, 250 GB HDD, Gigabit Ethernet, nVidia GeForce 7600 256MB RAM 48 Channel: Intel Core 2 Quad 2.67 GHz, 4 GB Memory, 250 GB HDD, Gigabit Ethernet, nVidia GeForce 7600 256MB RAM 64 Channel: Intel Core 2 Quad 2.67 GHz, 4 GB Memory, 250 GB HDD, Gigabit Ethernet, nVidia GeForce 7600 256MB RAM
Graphic Card	ATI Radeon 1950, nVidia GeForce 8600GT
Operating System	Windows XP, Windows 2003, WSS 2003, Windows Vista (Business and Enterprise Edition)
Preview	
Format	MPEG-4/H.264/MJPEG
Resolution	Megapixel/D1/CIF/QCIF
Free License	64
Maximum Number of Camera	64
Window Layout	1, 4, 6, 8, 9, 10, 16, 25, 36, 49, 64
Tree Display Panel	User may drag-n-drop to drag a video source to the layout manager for preview
Patrol Mode	Switches and displays each preview window accordingly. Pre-defined layout can be set to patrol mode as well
2-Way Audio	Supports 2-way audio. User may have 1-to-1 talk or 1-to-many audio broadcast to multiple devices at the same time.
Create Snapshots	Creates snapshot images and can be searched as an event index later on
Advanced Preview Mode	Maximum 64-channel preview at the same time with auto-drop frame mode according to CPU loading
Layout Manager	Setup pre-defined window layout to group certain cameras in the same layout. Layout manager can be displayed in full-screen mode.
Digital Zoom	User may zoom in/out the video display with mouse scroll wheel
Recording	
Schedule Recording	Records video with user-defined schedule and time period
Alarm Recording	Records video when a digital input event is triggered
Motion Recording	Records video when motion detected
Pre-event Recording	User-defined time period to record before a certain event occurs. Maximum 30 seconds.
Post-event Recording	User-defined time period to record after a certain event occurs. Default 5 minutes.
Watermark*	Digital time code embedded from hardware
Storage Manager	
Number of Drives	Supports up to 23 drives in one machine
Keep Certain Days	The video clips will be kept for certain days according to user-defined value
Recycle Recording	The oldest video clip will be overwritten when the disk reaches its minimum space requirement
Total Space Management	When total space reaches its minimum space requirement, certain space will be clean up. The oldest files will be removed first.
Playback	
Playback Mode	Play, Pause, Stop, Fast Forward, Fast Rewind, Play Backward, Play frame by frame, 1/2/4/8x Speed Control
Play Multiple Files *	Plays multiple files in sequence for a period of time
Create Snapshots	Creates snapshot images on-the-fly and can be searched as an event
Export Video	Exports a period of video clips into one AVI file
Synchronized Playback	4-channel synchronized playback at the same time
Digital Zoom	User may zoom in/out the video display with mouse scroll wheel
Search	
Time Sequence Search	Search video clips with date, time, channel
Event Search	Search motion detection, digital input, bookmark, snapshot event with specified date, time, channel
Status Event Search	Search events on video loss / recovery, network disconnect / reconnect, user login / logout, database log with specified date, time, and channel
Smart Search*	Search video clips with motion occurs in certain region
Time-based Search Bar	The recording and events are displayed with a time-bar, user may click on the bar to start playing the recorded archive
Snapshot Viewer	Display snapshots in thumbnail view; user may browse the snapshots then click it to start playback video clip at that time stamp.
PTZ Control	
PTZ Management	Manages pan, tilt, zoom operation with speed control
Protocol Supported	Pelco-P, Pelco-D, Lilin, Dynacolor, Samsung, Kampro, Sony VISCA, Panasonic protocol supported
Preset Position	Goto, set, clear preset positions and patrol on preset positions
Preset Position Number	32
PTZ Tour	Patrol preset positions with user-defined dwell time
PTZ Pattern	Executes speed dome pattern command
Expandable PTZ Command	User-defined PTZ command to support additional PTZ protocols
Mouse PTZ	On-screen 8-direction PTZ operation with mouse operation. This can be run under full-screen mode as well
USB Joystick on PC	Connects joystick on the PC via USB port to control speed dome directly
Absolute Position	Supports absolute position on CAM-6500 and CAM-6600 series
Event Handling	
Event Types	Handles motion detection, alarm, video loss, network disconnection events
Event Acknowledgement*	Event will need to be acknowledged by security operator
Trigger Digital Output	Triggers digital output when certain events (digital I/O or motion detection) occur
Hot-Spot Window	Activates and switches the channel with event to the hot-spot window. The original video in the hot-spot window will then be switched over.
Pop-up Window	Mini-preview window will be pop-up when event occurs. Pop-up window will be dismissed when user-defined dwell time elapsed or security operator click on the "Dismiss" button.
Event Log	Triggered event will be recorded into an event log
E-Mail Notification	E-Mail notification with captured snapshot
FTP Notification	FTP captured snapshot to the FTP server
Play audio file	Plays user-defined audio file or beep on the machine
Goto PTZ Preset	When event occurs, it requests the speed dome to go to certain PTZ preset position
Execute Command	User-defined command will be executed.
Scheduled Event*	User may setup a schedule to execute certain operation. For example, generate a snapshot in JPEG and FTP to a site.
eMap	
eMap Manager	eMap configuration and management
eMap Monitor	Creates alarm when an event occurs on a certain camera in eMap
Preview-All Mode	Display map with all cameras preview on. When double-click on the video, original video resolution and frame rate will be brought up. Mouse PTZ is set to on as default.
eMap Tour	Maps can be patrolled and displayed one by one with user-defined dwell time.
Permission Control	
Auto Login	Auto login and load the first preview layout
Multi-level Permission	Administrator, Standard User, Guest levels. User may add new User Group for advanced permission control
Security	Account/password defined with associated permission control
Camera Group Permission	Setup Camera Group permission for different users.
eMap Permission	Setup eMap permission for different users.

* The features will be implemented in later released bundled application

TECHNICAL SUPPORTE-Mail: tech.support@acti.comSkype: [customer.support-acti.com](https://www.skype.com/people/customer.support-acti.com)MSN Messenger: customer.support@acti.com

* All specifications are subject to change without notice.
* All brand names and registered trademarks are the property of their respective owners.

www.acti.com